



Cootamundra High School Newsletter



PRINCIPAL: Mr Neil Reaper

DEPUTY PRINCIPAL: Mrs Janine Nelson

BATTLE OF LONG TAN

On Thursday, 18 August Mr Reaper, Ben Camilleri, Jayden Sutton and Maddison Baker attended the Battle of Long Tan, Vietnam, 50th anniversary at Albert Park.

While Long Tan was one of many battles in the Vietnam War, the exemplary courage and determination of our forces in the single battle has come to represent the courage and fortitude of all who served in Vietnam.

Eighteen Australians were killed and 24 wounded. The opposing Vietnamese losses were counted in the hundreds. On the 50th anniversary of Long Tan we remember all who were deployed.



JEANS FOR GENES



With a few late donations, the final amount raised by Cootamundra High School for Jeans for Genes Day 2016 was \$232.05. Thank you from the SRC for the support shown by the staff and students to this worthy cause.

CALENDAR

Week 7, Term 3

| | |
|--|---|
| Mon, 29 Aug — Wed, 31 Aug Tues, 30 Aug | Aboriginal Ed STEM Camp Country Education Scholarships information Year 12 P & C Meeting, 7pm School Library |
|--|---|

Week 8, Term 3

| | |
|--|---|
| Wed, 7 Sept — Fri, 9 Sept Wed, 7 Sept Fri, 9 Sept | NSW Combined High Schools Athletics—HOMEBUSH Ag Vision Year 7 Immunisation PBL Assembly Harden Show—Cattle Team |
|--|---|

Week 9, Term 3

| | |
|--|--|
| Mon, 12 Sept — Fri, 16 Sept Fri, 16 Sept — Wed, 21 Sept | Year 11 Yearly Exams Melbourne Show—Cattle Team |
|--|--|



Education &
Communities

Public Schools NSW

Cootamundra High School

Poole Street, Cootamundra

Phone: (02) 6942 2711 | **Fax:** (02) 6942 1516

Email: cootamundr-h.school@det.nsw.edu.au

Website: www.cootamundr-h.schools.nsw.edu.au

GOLD AND SILVER FOR COOTAMUNDRA HIGH SCHOOL!

Paige Sedgwick, Shelby Nicka, Brianna Hefren and Justin Sheedy successfully argued their way to the Riverina Regional Final of the Premier's Debating Challenge. The team have been working on perfecting their debating skills all year and have triumphed over Murrumburrah High School, Batlow Technology School and Billabong High School. Topics have included That sports men and women should have an instant lifetime ban if found using performance enhancing drugs, That school teachers should be able to search the bags of students if they are suspected of carrying illicit items, and That all schools should be same-sex.



Throughout the year the team have alternated speaking roles and have had a chance to experience being 1st, 2nd and 3rd speakers as well as team adviser. They have also taken on leadership roles in the training of the 7/8 debating team, consisting of Ella Ronning, Jye Hefren, Jane Smith, Logan Collins and Annie Khoury. For the second year, both teams had a chance to participate in the Flying Squad Debating Workshop held at Leeton High School.



The 9/10 team opposed Deniliquin High School in the final as the affirmative in response to the topic That Australia should ban drinking at all public events such as festivals and sports. While we were not victorious our team put forward a competitive and well-considered argument which showcased their individual abilities. The 2016 Chief Adjudicator, Tony Davey, from The Arts Unit at the Department of Education Sydney provided constructive feedback to the team as a whole and individually, noting the improvement that the team have made over the course of the competition and the narrow margin between the affirmative and negative.



In addition to the fantastic result of the 9/10 team, Brianna Hefren has been selected to participate in the Junior State Debating Championship. She has demonstrated excellent oration skills in her role as 3rd speaker and is adept at forming an argument on any given topic. Brianna will represent Cootamundra High School and the Riverina in the competition held over three days at the University of Sydney in late November. This competition began in 1981 as the 'Neil Gunther Inter-Regional Debating Competition', involving Year 10 students from across the state. This is a wonderful opportunity for Brianna and we are very proud of what she has achieved this year.



P & C DONATION

The goal post purchased by the P&C have been erected. Along with some oval maintenance including some top dressing, this has provided Cootamundra High School and our community with an excellent resource. This upgrade will enable the High School to host soccer, rugby league and rugby union matches on our premises. This will increase the opportunity for school team to be supported by fellow students and further develop school spirit.



FROM THE CAREERS DESK

FEE FREE COURSES FOR SCHOOL LEAVERS

In the coming weeks there will be TAFE courses offered for Year 11 and 12 school leavers that will give students the opportunity to gain some workplace skills. For students wanting to gain skills with the hope of employment in Metals and Engineering, there is a 3 week course coming up in Cootamundra commencing November 7. (Please see attached flyer). Expressions of interest go to either Mrs Alderman or Kirsty Kemp.

EARLY ENTRY REMINDERS

A reminder to Year 12 considering Early Entry that the University of Wollongong Program closes this Friday. The Schools Recommendation Scheme is open until Friday 30 September.

COUNTRY EDUCATION FOUNDATION SCHOLARSHIPS

Every year our local Country Education Foundation makes available some generous funding for students embarking on further education and training in their chosen fields. Members of the CEF committee will

be meeting with Year 12 next Tuesday in the library to explain the process. Parents are welcome to come along at 1.30pm. (This date is still tentative so best to call the school for confirmation on Monday).

JOHN MCGRATH FORD APPRENTICESHIPS INFORMATION NIGHT

The McGrath Auto Group requires Mechanical Apprentices for the coming year across their six sites in Canberra, Goulburn and Queanbeyan. There is an information evening being held on 7 September at 5.45pm until 7.00pm at their Woden branch

AUSTRALIAN SKILL SHORTAGE RESEARCH RESULTS

This regular 6 monthly update makes for interesting reading. Whilst it is explored in Year 10 Careers classes, it is a worthwhile read for everyone in terms of where our skill shortages are. Go to <http://www.employment.gov.au/skill-shortages>.

TAFE RIVERINA INSTITUTE
Interested in a career in the Metals trades?

In collaboration with local industry and employment providers, TAFENSW Riverina Institute is answering the need to train individuals in preparation for entering the Metals trades – particularly metal fabrication, welding, and fitting and machining.

In just three weeks, students will learn many essential skills to work within an Apprenticeship Training Plan, including:

- Engineering measurements
- Basic hand/power tool skills
- Welding and machinery experience
- Work experience

The program concludes with an exit interview, assessing the student's ability and aptitude in the chosen trade area. By taking part in this program, students will gain a valuable insight into the industry and the type of work undertaken.

FOR MORE INFORMATION...
CONTACT: Kirsty Kemp, School Engagement Officer
Phone: 63828528 Email: kirsty.kemp@tafensw.edu.au

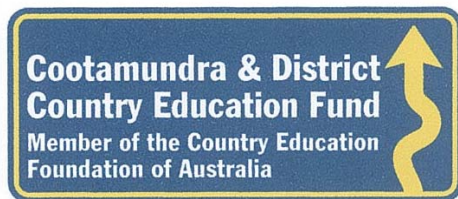
SRC SCHOOL SOCIAL

The Cootamundra High School SRC are holding Term 3's Social on Tuesday, 6 September at 7pm. 350 PBL Points are required to attend, as at Monday, 29 August.

The theme is Spooky/Scary. The cost is \$4.00. Doors will be closing at 7.15pm, with no late entry without prior arrangement with the school. There will be no leave Passes, and students must be picked up at 10pm by a parent or guardian.



COOTAMUNDRA & DISTRICT COUNTRY EDUCATION FUND EVENT



This fund provides financial help to selected school leavers who live or attend school in the former Cootamundra Shire to commence their careers. Selection is not focused on academic success, but applicants need to show that they have:

- A realistic goal for their future and need financial assistance to enter a traineeship, apprenticeship, TAFE or university and
- Demonstrated a commitment to achieving their goal. They must be "Having a go!"
- An element of financial need (not want) to continue their education.



With the assistance of our patron and sponsors, the Fund will provide a total of \$14,000 in 2016 to successful applicants. The amount awarded is at the discretion of the Committee but is a once only amount of up to \$3,000 split over 2 years. Funding in year 2 depends on successful completion of year 1 studies and completion of progress reports. A Grant from us "opens

the gate" to other funding sources only available to our beneficiaries. The "multiplier" effect can be very significant, some students having received up to \$5,000 on top of our Grant! Application forms are available from <https://engage.cef.org.au/student/apply>, for a grant from early September.

In 2008 Laurie Cowled, a former Bethungra resident and pupil of the Cootamundra Intermediate High School very generously provided money enabling the establishment of the Cootamundra and District Country Education Fund Incorporated and still supports the Fund as a Gold Sponsor.

Since 2008 the Fund has helped 54 Coota kids study mechanics, child care, engineering, law, medicine, teaching, agriculture and many more occupations. We have a 90% plus success rate. If only your football team could do as well! For those interested in sponsorship, details are available from the Grant

Supervisor (0419 277 907). All donations are tax deductible.


IT'S ON!


"A BLACK TIE FOR A GOOD TIME"

| | |
|-------|--|
| WHEN | 10th September 2016 at 6pm till late. |
| WHERE | Cootamundra S & C Club Auditorium. |
| WHAT | A Real Dinner & Dessert by HAP Catering. Real Music by "The Young Ones". Auction Action by the Elders Team of Interesting items & fun opportunities. AND a raffle too! |
| WEAR | Guys Black Tie. Ladies whatever you choose. |

Tables of 10 or part available — Cost \$75 per head.
 Tickets & Tables Anna Ingold
annaingold@hotmail.com
 0417 476 621
 Tickets only — Braybrooks Pharmacy

PTO

WHATS HAPPENING AT THE ATS CENTRE

INDIGOBLUE DYEING WORKSHOP

INDIGOBLUE

Indigo Dyeing Workshop with
Ola Robertson & Bev Moxon



Saturday 3
September
9:30am–3:30pm
\$125pp



This one day workshop is an introduction to dyeing fabrics with indigo. Folding and wrapping techniques will be taught to produce beautiful patterns on silk scarves and cotton voile with indigo dye. Bookings with payment by Friday 26 August

DRAWING AND PAINTING WITH KAREN WALSH

Drawing & Painting

With
Karen Walsh



\$360

for 6 daytime sessions Time: 9:30pm - 3:00pm

Tuesday Sept 20 - Tues Oct 25, 2016

Location: The Arts Centre Cootamundra

Wallendoon Street, Cootamundra

The focus for this term will be on some portraiture and en plein air landscape. We hope to draw and paint on location at the Junee Licorice Factory and other places TBA.

This course is suitable for beginners and intermediate students to explore and build on their own creative skills. Students are required to bring their own art materials

For all enquires please contact: Karen Walsh 0421911127

Karen.walsh62@gmail.com

These art classes require a min of 6 students to commence and max of 10 so please book early.

WEAVING USING RECYCLED MATERIALS

Weaving Using Recycled Materials

with Meri Peach

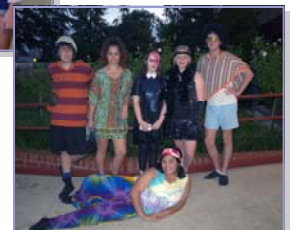
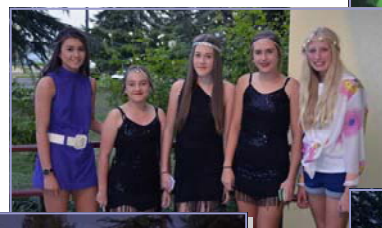
Saturday 24 & Sunday 25 September



Bookings essential \$145pp including materials
9:30am - 4pm daily.

BYO lunch and any recycled material that you'd like to try. Bookings with payment by Thursday 15 September

A FEW PICTURES OF THE TERM 2 SOCIAL





Education
Centre for Education
Statistics & Evaluation

***Tell Them From Me* parent survey Frequently Asked Questions (parents and carers)**

Centre for Education Statistics and Evaluation

1. What is the Partners in Learning parent survey?

The Partners in Learning parent survey is part of the *Tell Them From Me* suite of surveys on student engagement. The parent survey helps to clarify and strengthen the important relationship between parent and school.

The survey is designed to measure, assess and report insights from the parent point of view at the school and system levels. The focus of this NSW survey is on student wellbeing, engagement and effective teaching practices.

2. What kind of questions will the survey ask?

The survey questions aim at understanding parents' perspectives on their child's experience at school, including teaching, communication and the school's support of learning and behaviour. The survey also aims to understand parents' perspectives on activities and practices at home related to their child's learning.

The survey will ask parents questions about:

| | | | |
|------------------------------------|----------------------|----------------------------------|---------------------------------|
| Parents feel welcome | Parents are informed | Parents support learning at home | Parents participation at school |
| School supports positive behaviour | Safety | Inclusion | School supports learning |

3. How have schools been selected to take part?

The survey is open to all NSW government schools at no cost to them. Your school has decided to participate.

4. How will taking part in this survey benefit my child's school?

The parent survey provides school principals and school leaders with parents' perspectives on their school as well as learning at home. Communication between parents and staff, activities and practices at home, and parent views on the school's support of learning and behaviour help build an accurate and timely picture that schools can use for practical improvements.

Data collected from the survey responses are quickly compiled into reports for school leaders. Principals can then use this information to help them identify emerging issues and plan for school improvement.

5. How does the parent survey relate to the student survey?

The parent survey is complementary to the *Tell Them From Me* student survey that your child may have been asked to complete. These surveys are offered (along with a teacher survey) to ensure schools can capture the views of students, teachers and parents.

For more detail on each of the surveys, see the survey website: <http://surveys.cese.nsw.gov.au/>

6. What do I need to do to participate in the survey?

The survey typically takes 15 minutes and is conducted entirely online through a secure website operated by the survey developers, *The Learning Bar*. You will be provided with a link to complete the survey at home or your school may make computers available so that you can complete the survey during school hours.

7. Do I need to participate?

No, participation in the survey is optional. Whilst your responses are very much appreciated, if during the survey, you feel uncomfortable, you can stop the survey at any time. The majority of questions in the survey can be skipped.

8. Will the school be able to identify me or my child from my responses?

Staff in schools will not be able to identify individual parents or students from parent responses. To protect parent anonymity, schools will be provided with a single username and password for the school prior to the start of the survey period. This username and password will then be distributed to parents. Data suppression rules are applied to the school reporting tools where there are fewer than five responses.

9. What sort of analysis will be done of the survey data?

Once the surveys are completed, reports are prepared and in most cases are available to schools within three business days. School leaders can use the data to better understand the experiences and views of parents at their school.

CESE will undertake state-wide analysis of the survey data in conjunction with existing student data held by the Department, including performance data. The results will help all schools better understand the relationship between parents and students' engagement, students' wellbeing, effective teaching and student learning. Results from CESE's analysis of this data will also help teachers and principals discuss what works to improve student outcomes. This supports the Department's continuing focus on quality teaching and leadership. The data will be retained for future analysis to help us better understand the nature of student engagement and wellbeing over time.

10. When will the Partners in Learning survey happen?

The surveys will be conducted in all participating schools between Monday 22nd August (Week 6, Term 3) and Friday 21st October 2016 (Week 2, Term 4).

What is CESE?

The Centre for Education Statistics and Evaluation (CESE) is part of the Department of Education.

CESE has been established to improve the effectiveness, efficiency and accountability of education in New South Wales.

CESE will identify and share what works, creating new opportunities to improve teaching and learning across all of education.

More information about CESE is available at: www.cese.nsw.gov.au

What is *The Learning Bar*?

The Learning Bar is a Canadian education company that specialises in school surveys for both primary and secondary students. Its survey, *Tell Them From Me*, is the largest national school survey in Canada, used in nine of Canada's ten provinces. More than 2,600 schools and 1.7 million Canadian students have participated in the survey over the last nine years. Australian schools have been participating in the *Tell Them From Me* surveys since 2012.

The Learning Bar is led by Dr J Douglas Willms. Dr Willms is a Professor and Director of the Canadian Research Institute for Social Policy at the University of New Brunswick, and holds the Canada Research Chair in Literacy and Human Development. Dr Willms led the development of questions on student engagement for the OECD's Programme for International Student Assessment (PISA).

More information about *The Learning Bar* is available at: www.thelearningbar.com

If you have any questions about the parent survey, please contact CESE via email: TTFM@det.nsw.edu.au or by telephone: 9561 8056 / 9561 8370.